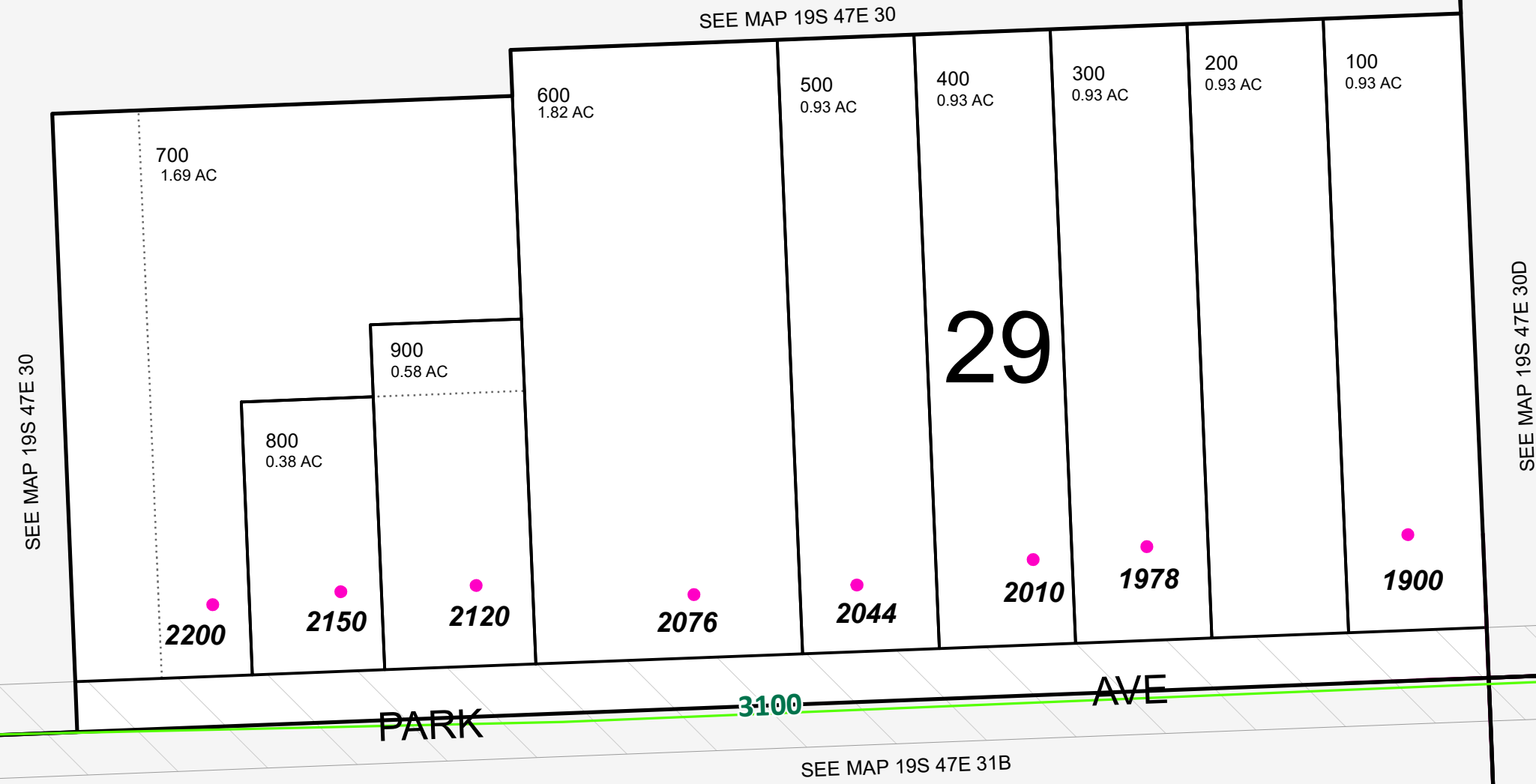


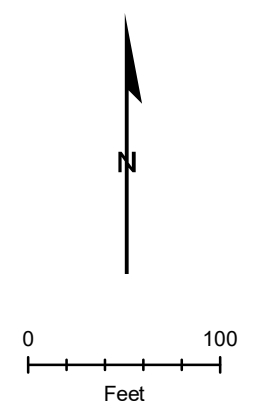
| MAPNUM | TAXLOT | REF | SITUSADDRESS |
|-----------|--------|------|----------------------|
| 19S4730CD | 100 | 9703 | 1900 PARK AVE, NYSSA |
| 19S4730CD | 300 | 9706 | 1978 PARK AVE, NYSSA |
| 19S4730CD | 400 | 9707 | 2010 PARK AVE, NYSSA |
| 19S4730CD | 500 | 9708 | 2044 PARK AVE, NYSSA |
| 19S4730CD | 600 | 9704 | 2076 PARK AVE, NYSSA |
| 19S4730CD | 700 | 9709 | 2200 PARK AVE, NYSSA |
| 19S4730CD | 800 | 9711 | 2150 PARK AVE, NYSSA |
| 19S4730CD | 900 | 9712 | 2120 PARK AVE, NYSSA |



38000 - Nyssa Grid System

NOTE:
HIGHLIGHTED CELLS, INDICATE
PARCELS WITH MULTIPLE ADDRESSES.

THIS MAP WAS PREPARED FOR
ASSESSMENT PURPOSE ONLY



19S47E30CD