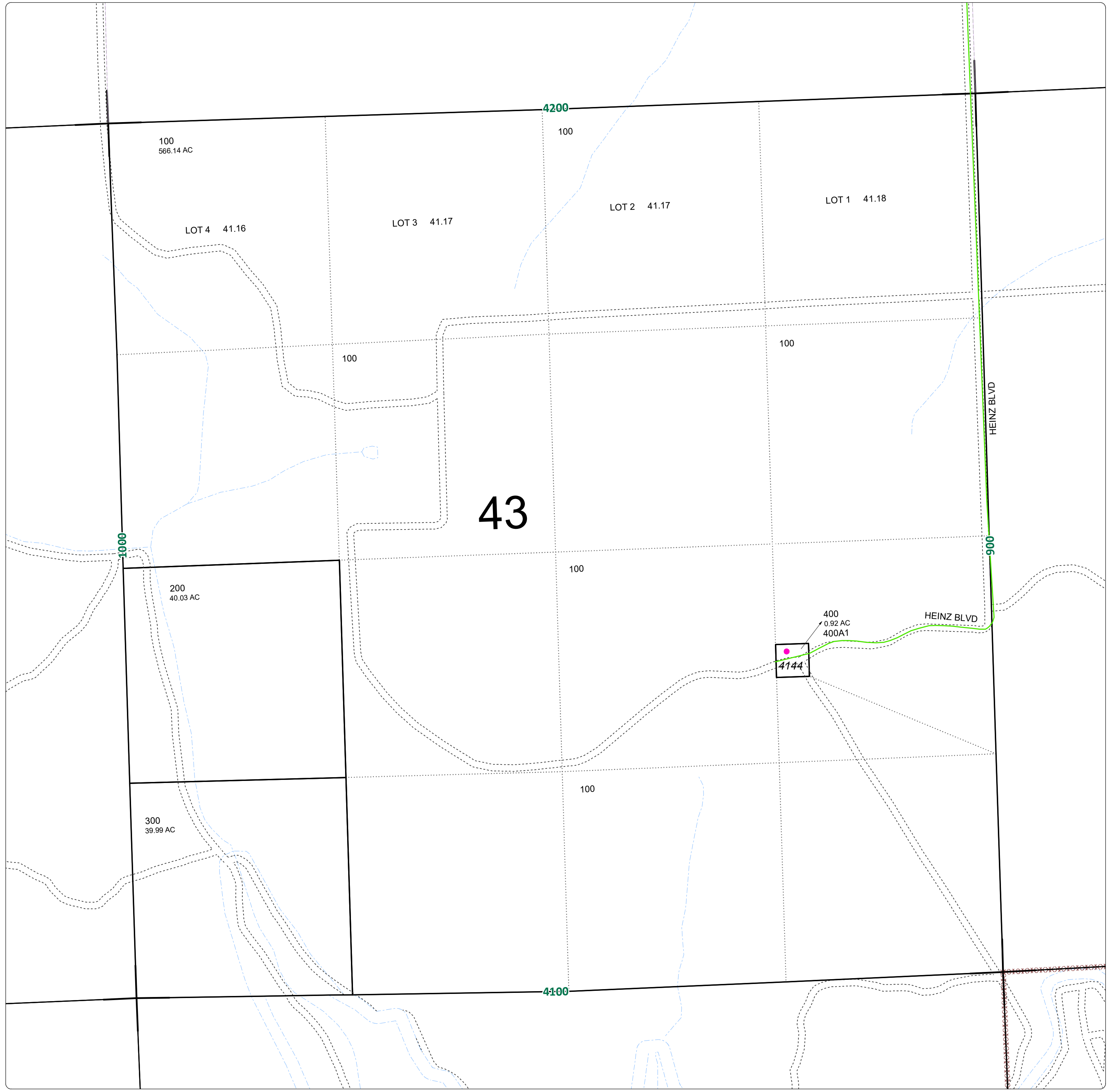
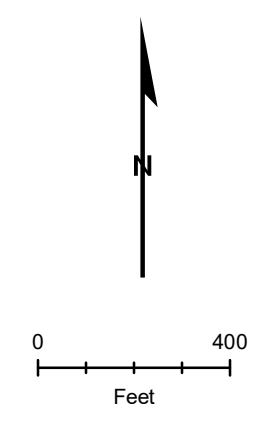


| MAPNUM | TAXLOT | REF | SITUSADDRESS |
|---------|--------|-------|--------------------------|
| 18S4604 | 400 | 18606 | 4144 HEINZ BLVD, ONTARIO |
| 18S4604 | 400 | 16052 | 4145 HEINZ BLVD, ONTARIO |



NOTE:
HIGHLIGHTED CELLS, INDICATE
PARCELS WITH MULTIPLE ADDRESSES.

THIS MAP WAS PREPARED FOR
ASSESSMENT PURPOSE ONLY



18S46E04