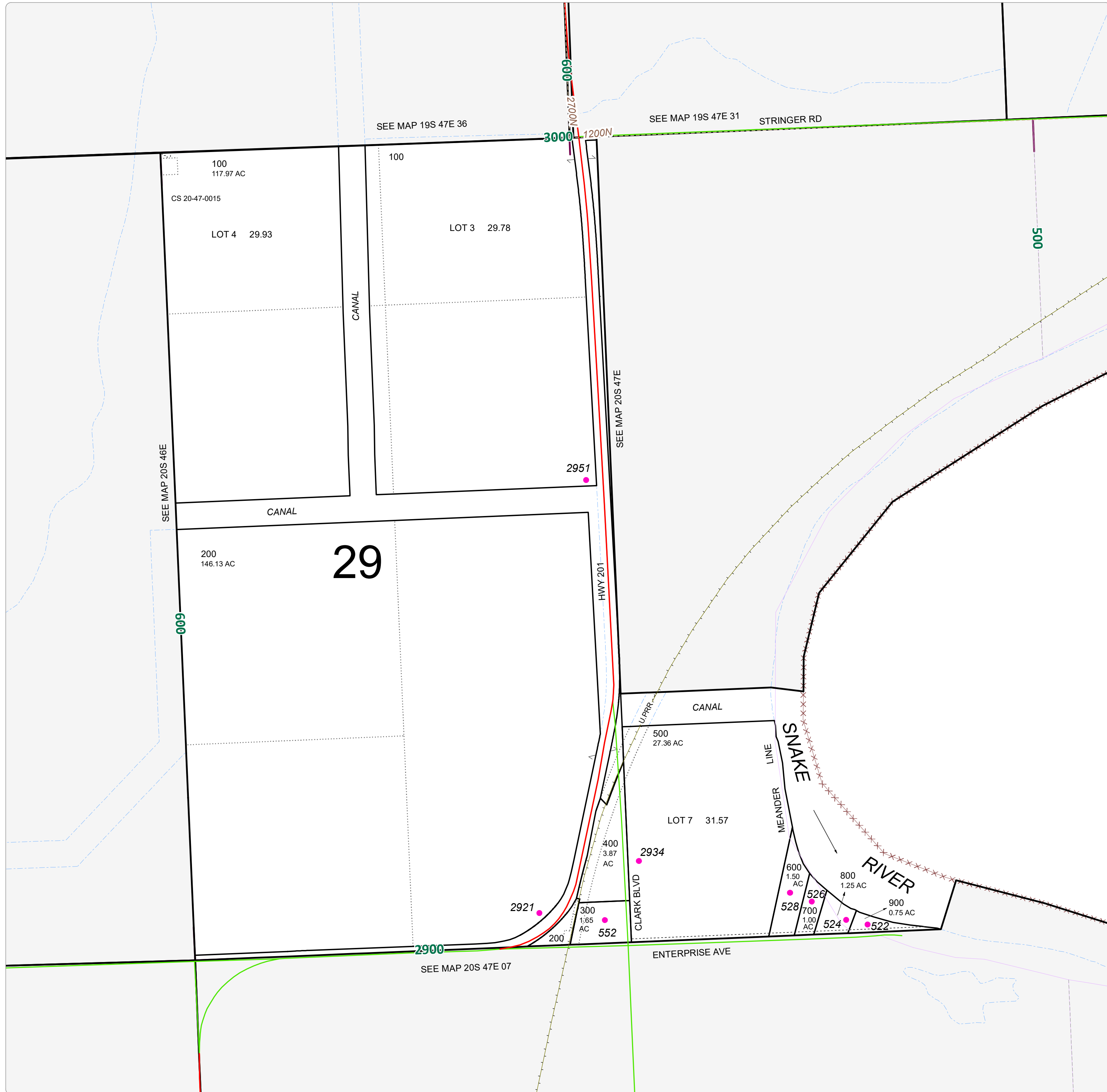
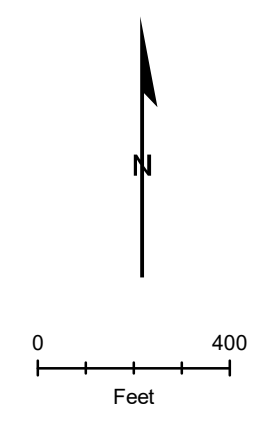


MAPNUM	TAXLOT	REF	SITUSADDRESS
20S4706	100	10054	2951 201 HWY, NYSSA
20S4706	200	10055	2921 201 HWY, NYSSA
20S4706	300	10056	528 ENTERPRISE AVE, NYSSA
20S4706	500	10058	2934 CLARK BLVD, NYSSA
20S4706	600	10059	528 ENTERPRISE AVE, NYSSA
20S4706	600	10059	530 ENTERPRISE AVE, NYSSA
20S4706	700	10061	526 ENTERPRISE AVE, NYSSA
20S4706	800	10062	524 ENTERPRISE AVE, NYSSA
20S4706	900	10060	522 ENTERPRISE AVE, NYSSA



NOTE:  
HIGHLIGHTED CELLS, INDICATE  
PARCELS WITH MULTIPLE ADDRESSES.  
1000N - Nyssa Grid System

THIS MAP WAS PREPARED FOR  
ASSESSMENT PURPOSE ONLY



**20S47E06**