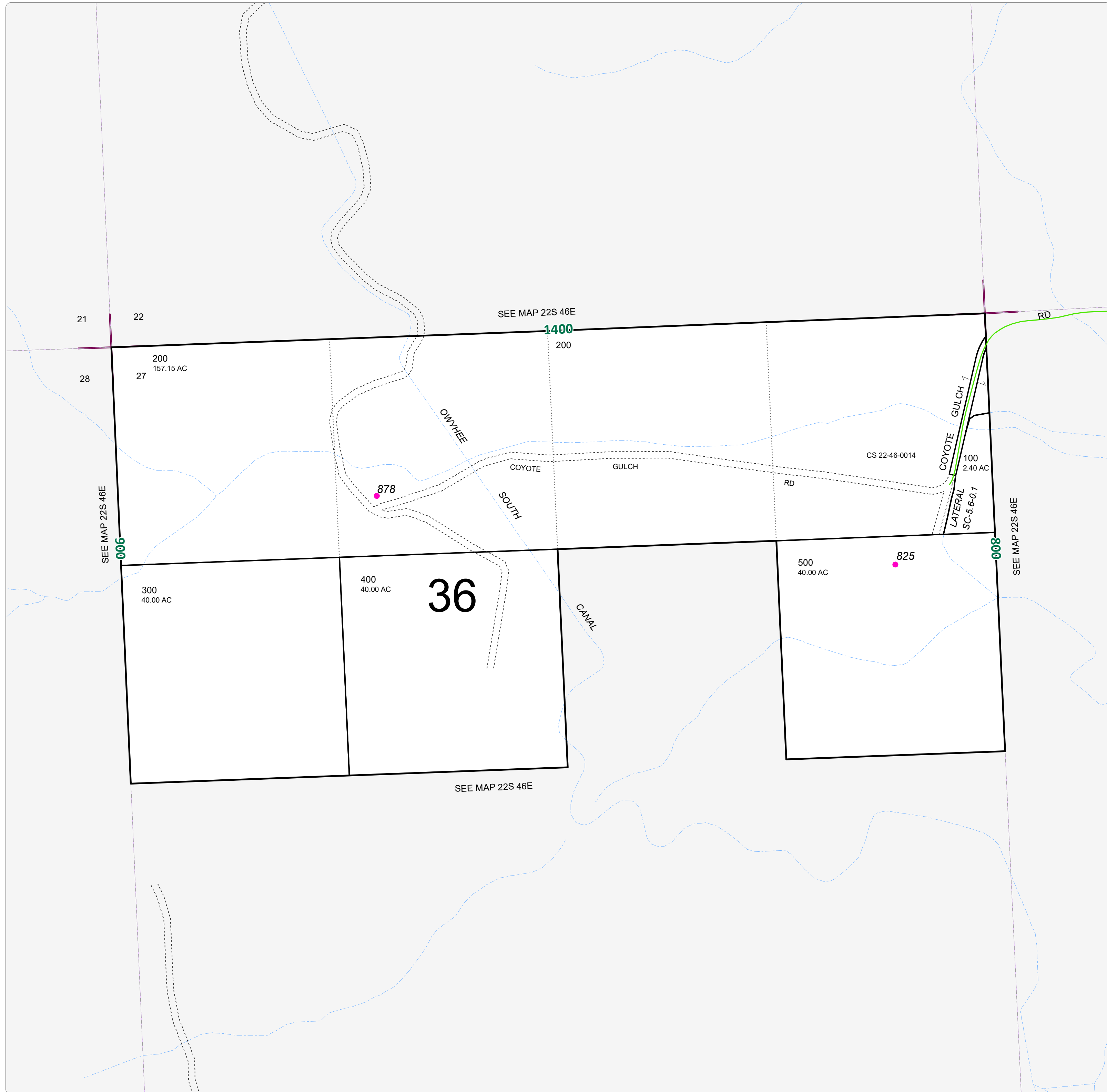


| MAPNUM | TAXLOT | REF | SITUSADDRESS |
|---------|--------|-------|-----------------------------|
| 22S4627 | 200 | 10977 | 878 COYOTE GULCH RD, ADRIAN |
| 22S4627 | 500 | 15503 | 825 COYOTE GULCH RD, ADRIAN |



NOTE:
HIGHLIGHTED CELLS, INDICATE
PARCELS WITH MULTIPLE ADDRESSES.

THIS MAP WAS PREPARED FOR
ASSESSMENT PURPOSE ONLY



22S46E27